



GOOD TO DRILL<sup>®</sup>

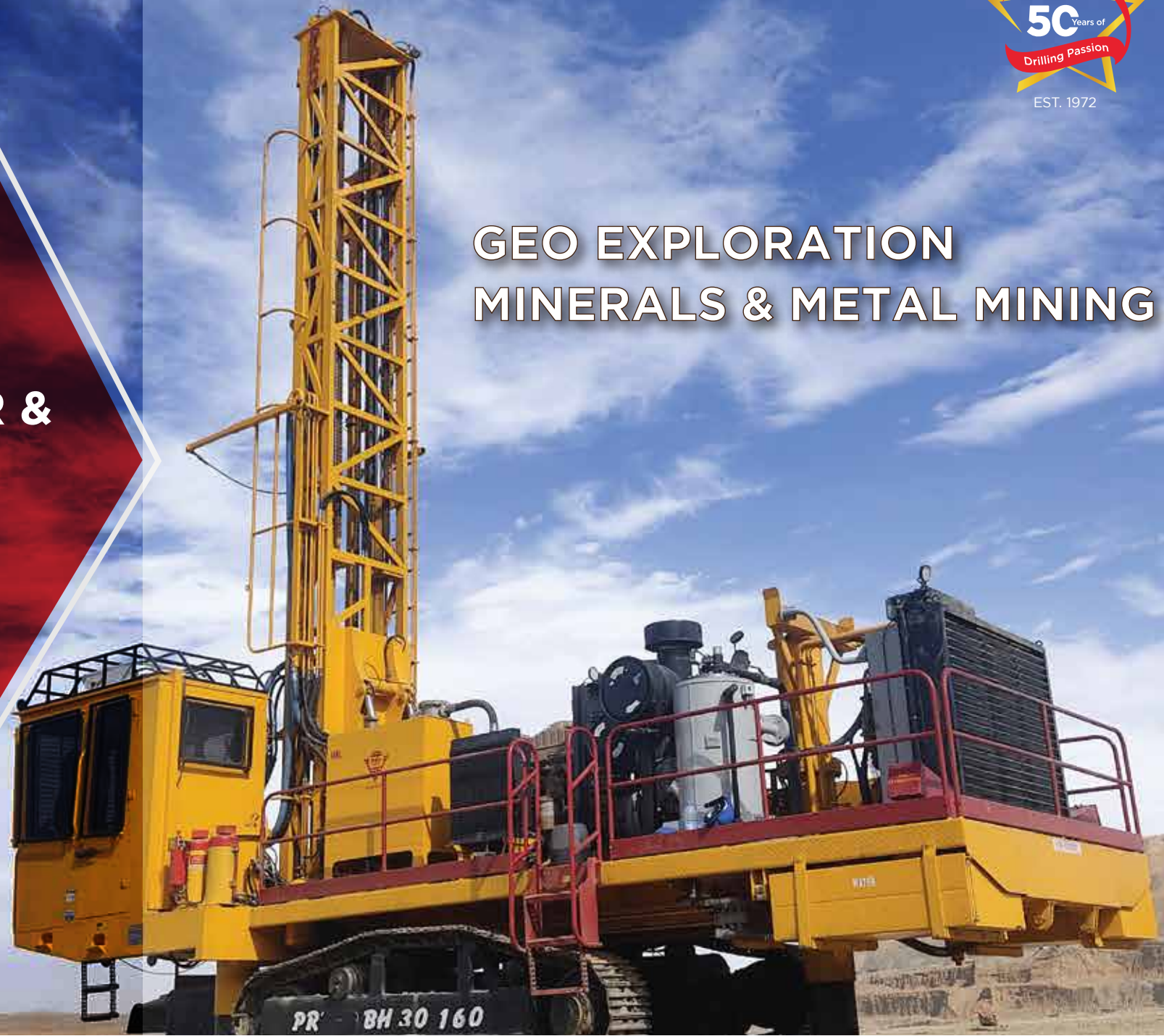
**DRILL SMARTER &  
FASTER WITH  
PRD RIGS**



Scan AR Code  
View the rigs for an experience



**GEO EXPLORATION  
MINERALS & METAL MINING**





# ABOUT US

For 50 years, PRD Rigs has been one of the leading drilling and exploration rig manufacturers in the world. Having serviced more than 70+ countries, PRD Rigs have an amazing fleet of quality products for all types of surface and underground mining. It is one of the well-established companies in India with a strong reputation in the drilling industry. PRD stands for “Paranthaman Rock Drills”

PRD rigs are typically designed to be highly mobile and versatile, allowing them to be easily transported to and set up at various mining sites. They can also be designed to operate in a variety of environmental conditions, such as extreme temperatures or high altitudes.

Our rigs are designed to operate in a variety of environments, from desert landscapes to deep underground mines. They can also be configured to drill at different angles and depths, depending on the geological conditions of the site and the specific requirements of the mining operation.

The company has a strong presence in Africa, Middle East, Asia, Australia and South America, and is constantly expanding its operations to new areas. With such a large area to cover, PRD Rigs has a lot of scope for growth and expansion. The company is always looking for new opportunities to increase its market share and diversify its operations.

**30+**  
Rig Models

**500+**  
Happy  
Customers

**2500+**  
Units Sold  
Across the world

ISO 9001:2015  
BUREAU VERITAS  
Certification



HAPPY DRILLING FOREVER WITH PRD RIGS



# PRD MULTISTAR

SURFACE MINERAL EXPLORATION  
MULTIPURPOSE (RC / DIAMOND CORE)





- ▶ DRILLING CAPACITY  
Diamond core: 1200 m  
RC: 400 m @ 140 mm (5 1/2")
- ▶ PULL UP FORCE  
25800 kgf
- ▶ PULL DOWN FORCE  
17700 kgf
- ▶ DRILL HEAD  
High torque multipurpose drill head  
Low speed (rpm): 139 - 157  
High torque (Nm): 9600 - 6148  
High speed (rpm): 800 - 1250  
Low torque (Nm): 1671 - 1069
- ▶ ROD HANDLER  
RED 180 rod handler for vertical and angle drilling - operated through wireless radio remote control
- ▶ ROD BIN  
32 no's x 6 m (192 m)
- ▶ SAMPLING SYSTEM  
Advanced cyclone with adjustable split static cone splitter
- ▶ ANGLE DRILLING  
45° - 90° manual locks in 5° increments
- ▶ ROD BREAK OUT  
Dual break out system
- ▶ AIR COMPRESSOR  
1165 cfm - 508 psi
- ▶ OVERALL DIMENSION  
l x b x h: 12000 x 3100 x 4500 mm
- ▶ OPERATING WEIGHT  
45 ton\*
- ▶ Safety standards suitable for all mines



## PRD MULTISTAR

SURFACE MINERAL EXPLORATION  
MULTIPURPOSE (RC / DIAMOND CORE)

\*Booster compatible



- ▶ DRILLING CAPACITY  
400 m @ 140 mm (5 1/2")
- ▶ PULL UP FORCE  
25800 kgf
- ▶ PULL DOWN FORCE  
17700 kgf
- ▶ DRILL HEAD  
Torque: 6545 Nm; Speed: 0 - 100 rpm
- ▶ ROD HANDLER  
EZ rod handling for vertical and angle drilling - operated through wireless remote
- ▶ ROD BIN  
32 No's x 6 m (192 m)
- ▶ SAMPLING SYSTEM  
Advanced cyclone with adjustable split static cone splitter
- ▶ ANGLE DRILLING  
45° - 90° manual locks in 5° increments
- ▶ ROD BREAK OUT  
SBS - 6 - Swing - in breakout (Single)
- ▶ AIR COMPRESSOR  
1200 cfm - 350 / 500 psi
- ▶ OVERALL DIMENSION  
l x b x h: 12500 x 3100 x 4500 mm
- ▶ OPERATING WEIGHT  
43 ton\*
- ▶ Safety standards suitable for all mines

\*Booster compressor compatible

## PRD OZ RC

### SURFACE MINERAL EXPLORATION

Drilling method: DTH - Reverse circulation



GOOD TO DRILL.





- ▶ DRILLING CAPACITY  
100 m @ 140 mm ( 5 1/2”)
- ▶ PULL UP FORCE  
15000 kgf
- ▶ PULL DOWN FORCE  
8700 kgf
- ▶ DRILL HEAD  
Torque: 4000 Nm; Speed: 0 - 100 rpm
- ▶ ROD HANDLER  
EZ rod handling for vertical and angle drilling operated through wireless remote
- ▶ ROD BIN  
32 No's x 6 m (192 m)\*
- ▶ SAMPLING SYSTEM  
Advanced cyclone with adjustable split static cone splitter
- ▶ ANGLE DRILLING  
45° - 90° manual locks in 5° increments
- ▶ ROD BREAK OUT  
Dual breakout system
- ▶ AIR COMPRESSOR  
900 cfm - 350 psi
- ▶ OVERALL DIMENSION  
l x b x h: 12500 x 3100 x 4300 mm
- ▶ OPERATING WEIGHT  
33 ton\*
- ▶ Safety standards suitable for all mines

## PRD GOLD GC

### SURFACE MINERAL EXPLORATION

Drilling method: DTH - Grade Control



GOOD TO DRILL.





- ▶ **MAXIMUM DEPTH**  
100 m @ 102 mm (4")
- ▶ **PULL UP FORCE**  
10000 kgf
- ▶ **PULL DOWN FORCE**  
7000 kgf
- ▶ **PRIME MOVER**  
Suitable engine: 160 - 260 hp
- ▶ **DRILL HEAD**  
Torque: 3000 Nm; Speed: 0 - 100 rpm
- ▶ **DRILLING ANGLE**  
45° - 90°
- ▶ **WINCH**  
Auxiliary winch: 0.5 ton
- ▶ **ROD BIN**  
Hydraulically lifted rod bin with 15 no's of 3m rod
- ▶ **SAMPLING SYSTEM**  
Standard cyclone
- ▶ **AIR COMPRESSOR**  
575 cfm - 225 psi\*
- ▶ **MOUNTING OPTION**  
Truck / Crawler
- ▶ **OVERALL DIMENSION**  
l x b x h: 8900 x 2450 x 3050 mm
- ▶ **OPERATING WEIGHT**  
19 ton\*
- ▶ **Safety standards suitable for all mines**

## PRD AIR CORE 100

### SURFACE MINERAL EXPLORATION

Drilling method: Air core



GOOD TO DRILL.





▶ MAXIMUM DEPTH  
PQ: 100 m, HQ: 200 m, NQ: 300 m

▶ PRIME MOVER  
Suitable deck engine

▶ DRILL HEAD

	Torque (Nm)	Speed (rpm)
1 <sup>st</sup> Ratio	3175 - 1161	113 - 309
2 <sup>nd</sup> Ratio	958 - 350	375 - 1026

▶ DRILLING ANGLE  
45° - 90°

▶ WINCH  
Main winch: 3 ton  
Wireline winch: 1 ton

▶ FOOT CLAMP  
Hydraulic operated foot clamp  
has gripping range of PQ, HQ, & NQ sizes

▶ WATER PUMP  
Displacement: 80 lpm  
Pressure: 750 psi

▶ OVERALL DIMENSION  
l x b x h: 5400 x 1800 x 2400 mm

▶ OPERATING WEIGHT  
7 ton\*

▶ Safety standards suitable for all mines

## PRD CORE 300

SURFACE MINERAL EXPLORATION

Drilling method: Diamond core





▶ **MAXIMUM DEPTH**  
PQ: 250 m, HQ: 450 m, NQ: 750 m

▶ **PRIME MOVER**  
Suitable deck engine

▶ **DRILL HEAD**

	Torque (Nm)	Speed (rpm)
1 <sup>st</sup> Ratio	5100 - 3155	113 - 184
2 <sup>nd</sup> Ratio	2460 - 1509	237 - 386
3 <sup>rd</sup> Ratio	1335 - 819	436 - 711
4 <sup>th</sup> Ratio	776 - 476	750 - 1200

▶ **DRILLING ANGLE**  
45° - 90°

▶ **WINCH**  
Main winch: 7 ton  
Wireline winch: 2 ton

▶ **FOOT CLAMP**  
Hydraulic operated foot clamp  
has gripping range of PQ, HQ, & NQ sizes

▶ **WATER PUMP**  
Displacement: 140 lpm  
Pressure: 1000 psi

▶ **OVERALL DIMENSION**  
l x b x h: 7000 x 2250 x 2700 mm

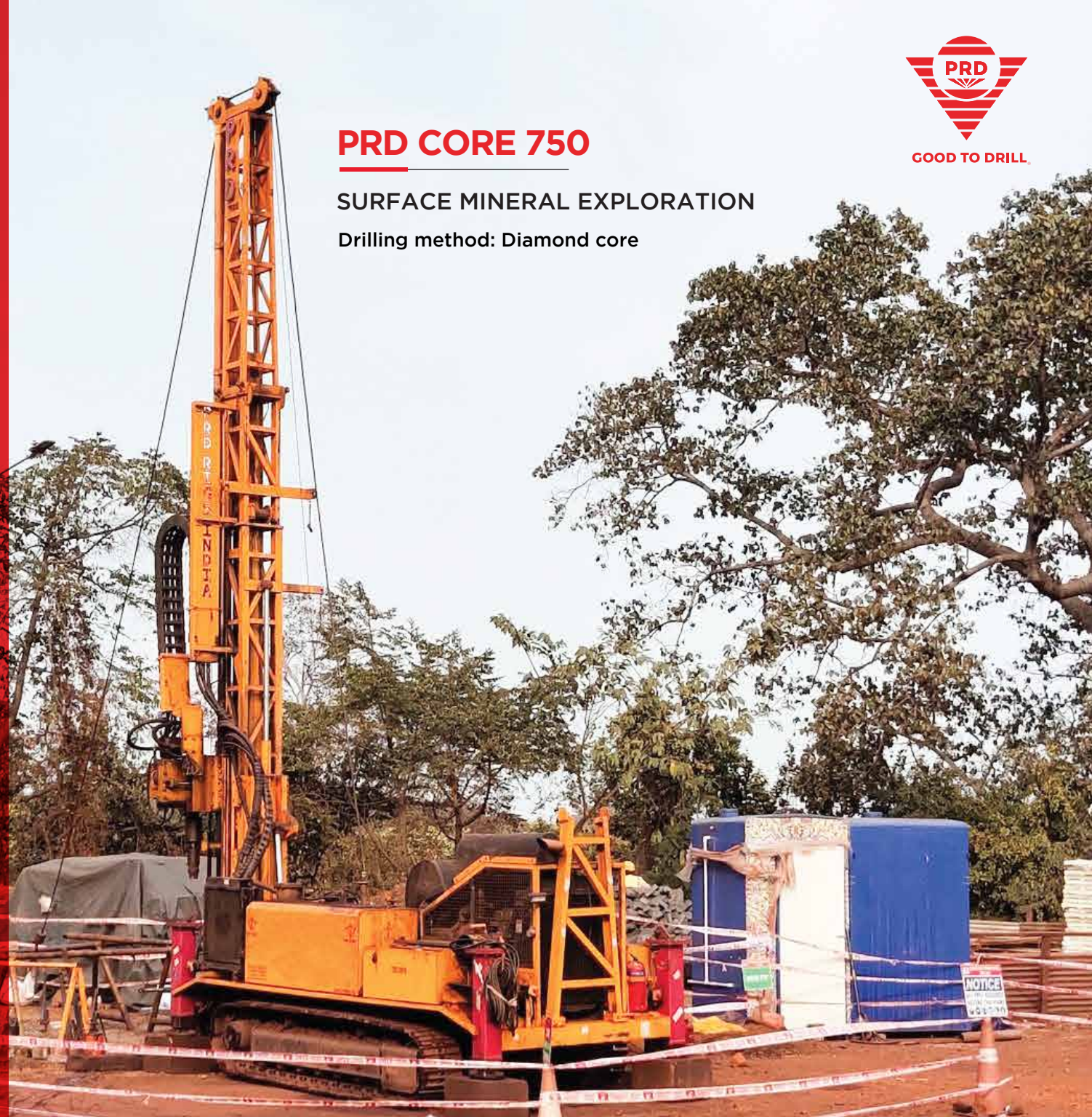
▶ **OPERATING WEIGHT**  
12 ton\*

▶ Safety standards suitable for all mines

## PRD CORE 750

**SURFACE MINERAL EXPLORATION**

Drilling method: Diamond core





▶ **MAXIMUM DEPTH**  
PQ: 500 m, HQ: 800 m, NQ: 1200 m, BQ: 1400 m

▶ **PRIME MOVER**  
Suitable deck engine

▶ **DRILL HEAD**

	Torque (Nm)	Speed (rpm)
1 <sup>st</sup> Ratio	6500 - 3047	90 - 194
2 <sup>nd</sup> Ratio	3122 - 1457	189 - 406
3 <sup>rd</sup> Ratio	1694 - 790	349 - 748
4 <sup>th</sup> Ratio	985 - 460	600 - 1200

▶ **DRILLING ANGLE**  
45° - 90°

▶ **WINCH**  
Main winch: 10 ton  
Wireline winch: 2 ton

▶ **FOOT CLAMP**  
Hydraulic operated foot clamp has gripping range of PQ, HQ, & NQ sizes

▶ **WATER PUMP**  
Displacement: 140 lpm  
Pressure: 1000 psi

▶ **OVERALL DIMENSION**  
l x b x h: 11800 x 4200 x 3500 mm

▶ **OPERATING WEIGHT**  
17 ton\*

▶ Safety standards suitable for all mines

## PRD CORE 1200

### SURFACE MINERAL EXPLORATION

Drilling method: Diamond core







GOOD TO DRILL

# PRD PC 500

AGGREGATE QUARRY, LIMESTONE,  
CONSTRUCTION & SURFACE MINING

Drilling method: DTH & Top hammer



- ▶ HOLE DIAMETER  
DTH: 90 - 115 mm (3 1/2" - 4 1/2")  
Top hammer: 24 - 72 mm
- ▶ MAXIMUM DEPTH  
DTH: 15 m  
Top hammer: 9 m

- ▶ DRILL HEAD  
Torque: 960 Nm; Speed: 60 rpm
- ▶ PULL UP FORCE  
550 kgf
- ▶ PULL DOWN FORCE  
750 kgf

- ▶ AIR COMPRESSOR  
DTH: 500 cfm / 150 - 200 psi  
Top hammer: 400 - 600 cfm / 100 psi
- ▶ OVERALL DIMENSION  
l x w x h: 5130 x 1940 x 2325 mm

- ▶ OPERATING WEIGHT  
2.9 ton\*
- ▶ TRAMMING SPEED  
3.2 km/h



## PRD HC 500 M

### BLAST HOLE & DSI SEGMENTS

Drilling method: DTH

Hole diameter	90 - 127 mm (3 1/2" - 5")
Maximum depth	15 m
Pull up force	1500 kgf
Pull down force	1500 kgf
Engine power	55 hp
Fuel consumption	4 l/h
Suitable Air compressor	400 cfm / 200 psi
	380 cfm / 200 psi
	450 cfm / 200 psi
Overall dimension	l x w x h: 5280 x 1920 x 2500 mm
Operating weight	4.8 ton*
Optional attachments	Angle Drilling
	Dual fuel system electric
	Dust collector

## PRD HC 500 D

### DRILLING FOR BLASTING IN QUARRIES DSI SEGMENTS

Drilling method: Top hammer

Hole diameter	38 - 45 mm
Maximum depth	10 m
Pull up force	1500 kgf
Pull down force	1500 kgf
Engine power	86 hp
Impact power	10 kW
Onboard Air compressor	45 - 50 cfm / 10 bar
Overall dimension	l x w x h: 5500 x 2150 x 2250 mm
Operating weight	5.5 ton*



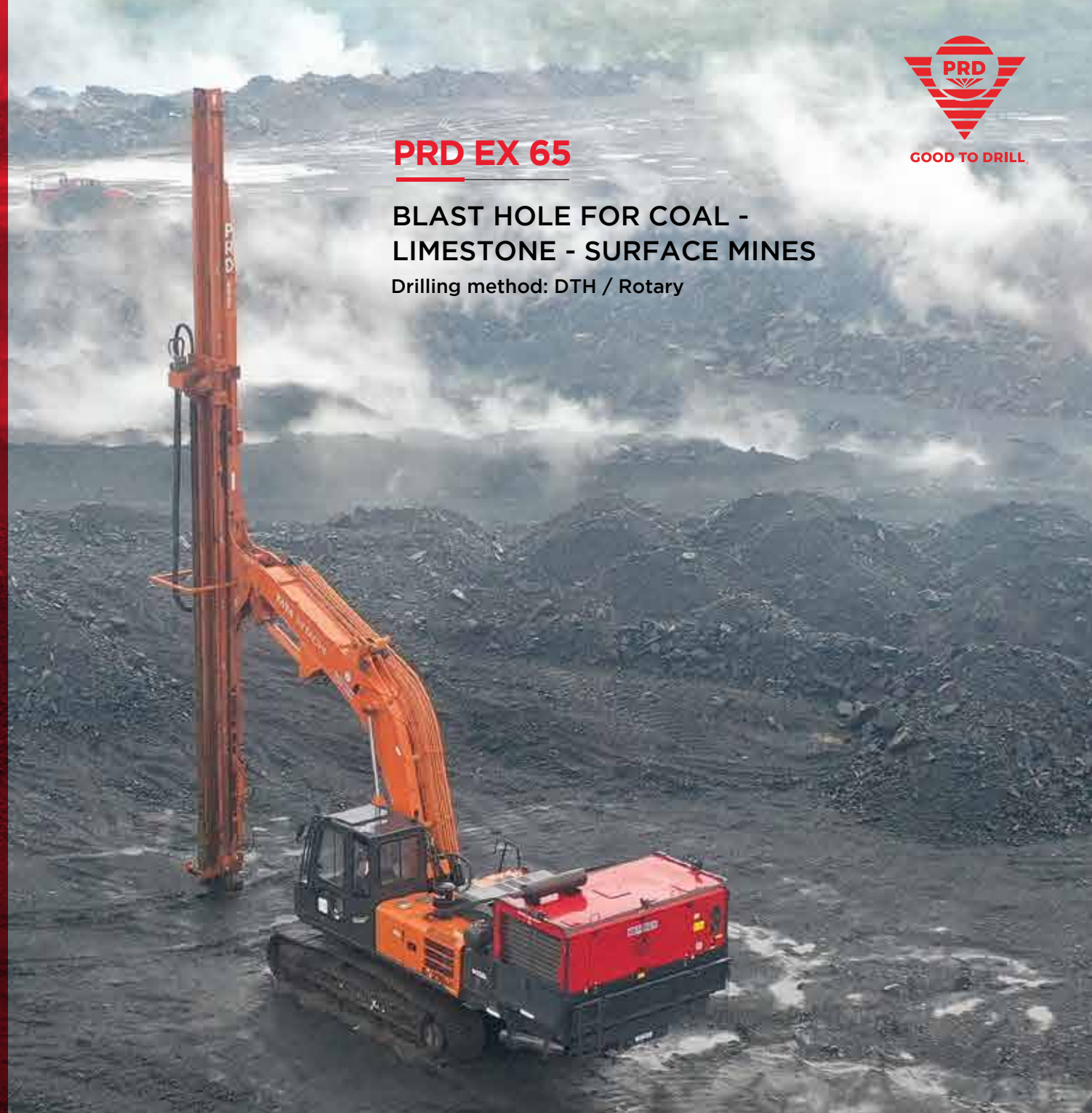


## PRD EX 65

### BLAST HOLE FOR COAL - LIMESTONE - SURFACE MINES

Drilling method: DTH / Rotary

- ▶ HOLE DIAMETER  
115 - 165 mm (4 1/2" - 6 1/2")
- ▶ MAXIMUM DEPTH  
24 m
- ▶ SINGLE PASS DEPTH  
6 m
- ▶ ROTARY HEAD  
Torque: 3561 Nm; Speed: 0 - 125 rpm
- ▶ ROD HANDLING  
6 m
- ▶ PULL UP FORCE  
7000 kgf (1:3) / 5296 kgf (1:4)
- ▶ PULL DOWN FORCE  
4350 kgf (1:3) / 3628 kgf (1:4)
- ▶ ANGLE DRILLING  
90° (Vertical)
- ▶ ROD CAROUSEL  
3 rod carousel
- ▶ AIR COMPRESSOR  
600 - 1100 cfm / 225 - 300 psi
- ▶ OPERATING WEIGHT  
16 ton\*
- ▶ Safety standards suitable for all mines





- ▶ **HOLE DIAMETER**  
165 - 250 mm (6 1/2" - 10")
- ▶ **MAXIMUM DEPTH**  
45 m
- ▶ **ENGINE**  
530 - 755 hp
- ▶ **SINGLE PASS DEPTH**  
9.1 m
- ▶ **PULL DOWN FORCE**  
28000 kgf
- ▶ **ROD CAROUSEL**  
Hydraulic operated 3 rod carousel
- ▶ **DRILL HEAD**  
Torque: 9000 Nm; Speed: 0 - 140 rpm
- ▶ **DUST COLLECTOR**  
Flow capacity: 2100 cfm
- ▶ **AIR COMPRESSOR**  
1250 - 1600 cfm  
High pressure: 350 psi  
Low pressure: 110 psi
- ▶ **DUAL TRAMMING SPEED**  
1.5 km/h & 2.7 km/h
- ▶ **OPERATOR CABIN**  
FOPS & HVAC cabin with all controls & gauges
- ▶ **OVERALL DIMENSION**  
l x b x h: 15280 x 5500 x 5000 mm
- ▶ **OPERATING WEIGHT**  
40 ton\*
- ▶ Safety standards suitable for all mines



## PRD BH 45 250

### BLAST HOLE RIG

Drilling method: Rotary





- ▶ HOLE DIAMETER  
165 - 203 mm (6 1/2" - 8")
- ▶ MAXIMUM DEPTH  
37 m
- ▶ ENGINE  
430 hp
- ▶ SINGLE PASS DEPTH  
9.1 m
- ▶ PULL DOWN FORCE  
13800 kgf
- ▶ ROD CAROUSEL  
Hydraulic operated 3 rod carousel
- ▶ DRILL HEAD  
Torque: 5000 Nm; Speed: 0 - 140 rpm
- ▶ DUST COLLECTOR  
Flow capacity: 2100 cfm
- ▶ AIR COMPRESSOR  
900 cfm / 110 - 350 psi
- ▶ DUAL TRAMMING SPEED  
1.5 km/h & 2.7 km/h
- ▶ OPERATOR CABIN  
FOPS & HVAC cabin with all controls & gauges
- ▶ OVERALL DIMENSION  
l x b x h: 13600 x 4300 x 4900 mm
- ▶ OPERATING WEIGHT  
33 ton\*
- ▶ Safety standards suitable for all mines

## **PRD BH 30 160**

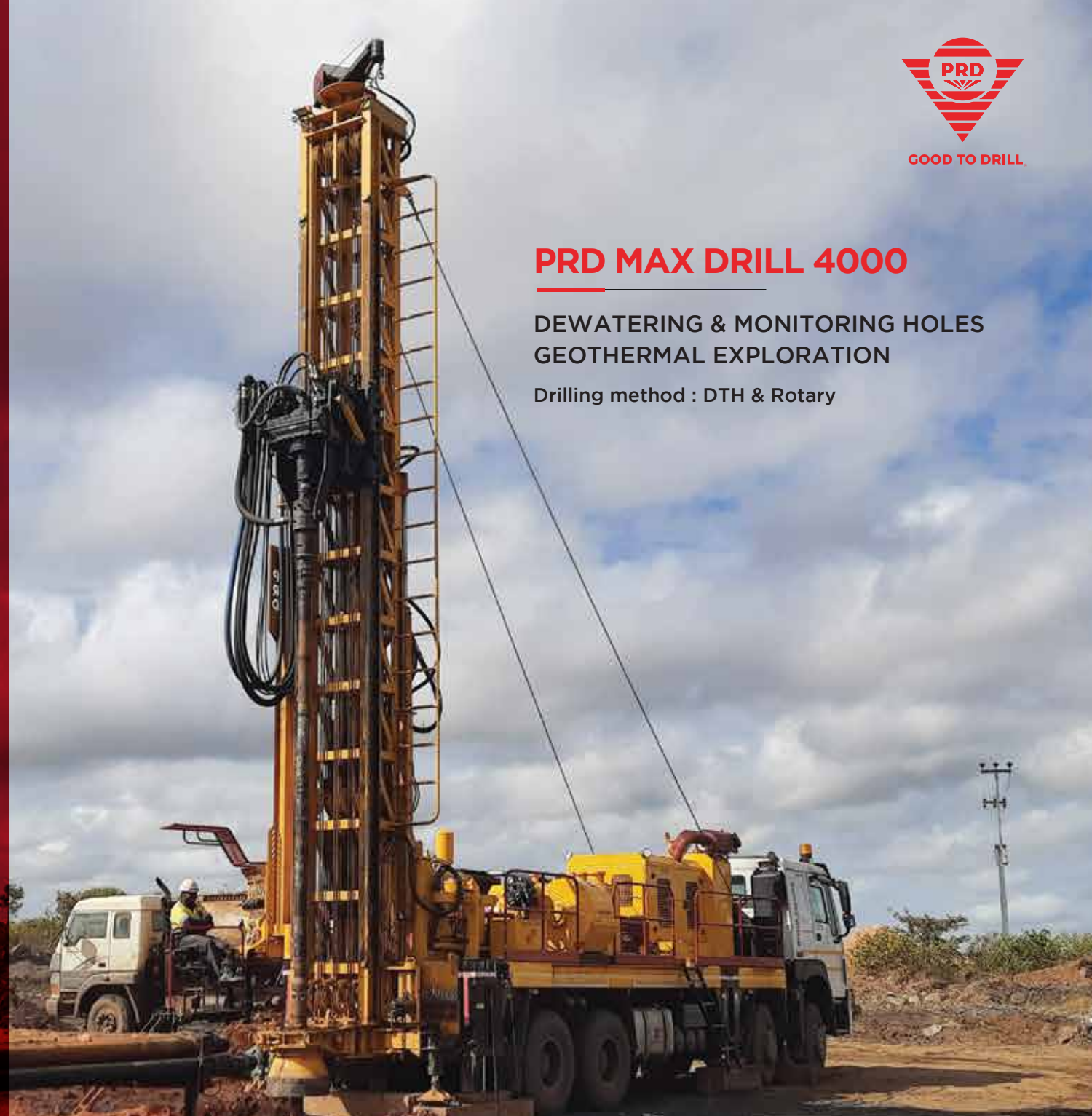
### **BLAST HOLE RIG**

Drilling method: DTH / Rotary





- ▶ **HOLE DIAMETER**  
165 - 711 mm (6 1/2" - 28")
- ▶ **MAXIMUM DEPTH**  
1350 m @ 6 1/2"
- ▶ **ENGINE**  
430 hp
- ▶ **PULL UP FORCE**  
42200 kgf
- ▶ **PULL DOWN FORCE**  
18500 kgf
- ▶ **DRILL HEAD**  
Tilting drill head  
Torque: 13700 Nm; Speed: 0 - 120 rpm
- ▶ **CENTRALISER TABLE**  
406 mm expandable upto 710 mm
- ▶ **FLUSHING MEDIUM**  
  
AIR COMPRESSOR  
1200 - 1270 cfm / 330 - 425 psi  
  
MUD PUMP  
PRD 250 hydraulic driven mud pump
- ▶ **MOUNTING OPTION**  
8 x 4 Truck
- ▶ **OVERALL DIMENSION**  
l x b x h: 12400 x 2800 x 4700 mm
- ▶ **OPERATING WEIGHT**  
38 ton\*
- ▶ **ADDITIONAL FEATURES**  
CATWALK ROD LOADER



## **PRD MAX DRILL 4000**

**DEWATERING & MONITORING HOLES  
GEOTHERMAL EXPLORATION**

Drilling method : DTH & Rotary





GOOD TO DRILL

# PRD WEEPHOLE

## DEWATERING

Drilling method : DTH

- ▶ HOLE DIAMETER  
127 - 203 mm (5" to 8")
- ▶ MAXIMUM DEPTH  
250 m
- ▶ ENGINE  
180 hp
- ▶ PULL UP FORCE  
12680 kgf
- ▶ PULL DOWN FORCE  
8710 kgf
- ▶ DRILL HEAD  
Torque: 5150 Nm; Speed : 0 - 100 rpm
- ▶ DRILLING ANGLE  
0° to +6°
- ▶ AIR COMPRESSOR  
600 cfm @ 200 psi / 1100 cfm @ 300 psi
- ▶ OVERALL DIMENSION  
l x b x h : 11500 x 2800 x 4800 mm
- ▶ OPERATING WEIGHT  
9 ton\*





# PRD i - Drill



## RED ROD HANDLING DEVICE



### REMOTE TRAMMING



### EZ ROD HANDLING



### RADIO EQUIPPED ROD HANDLING

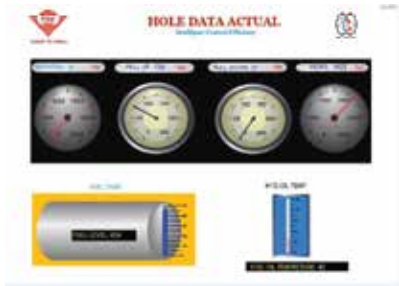
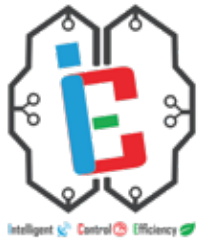


### ANGLE INDICATOR

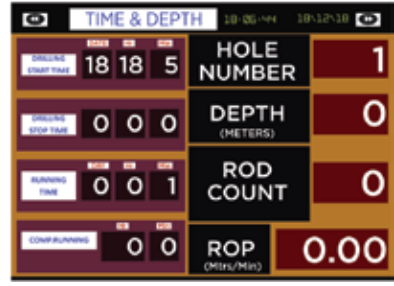


## INTELLIGENT CONTROL EFFICIENCY

### PRD ICE



### DEPTH INDICATOR



### GPS TRACKING



## AUTONOMOUS DRILLING

GPS marked hole to hole setting and drill capability.



# TOOLS & ACCESSORIES



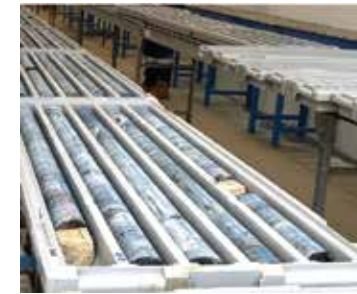
## OFFICIAL DISTRIBUTORS



DIAMOND DRILL BITS



FOOT CLAMP



CORE TRAY



ADDITIVES



THREAD GREASE



WATER SWIVEL



WIRE ROPE



HOIST PLUG



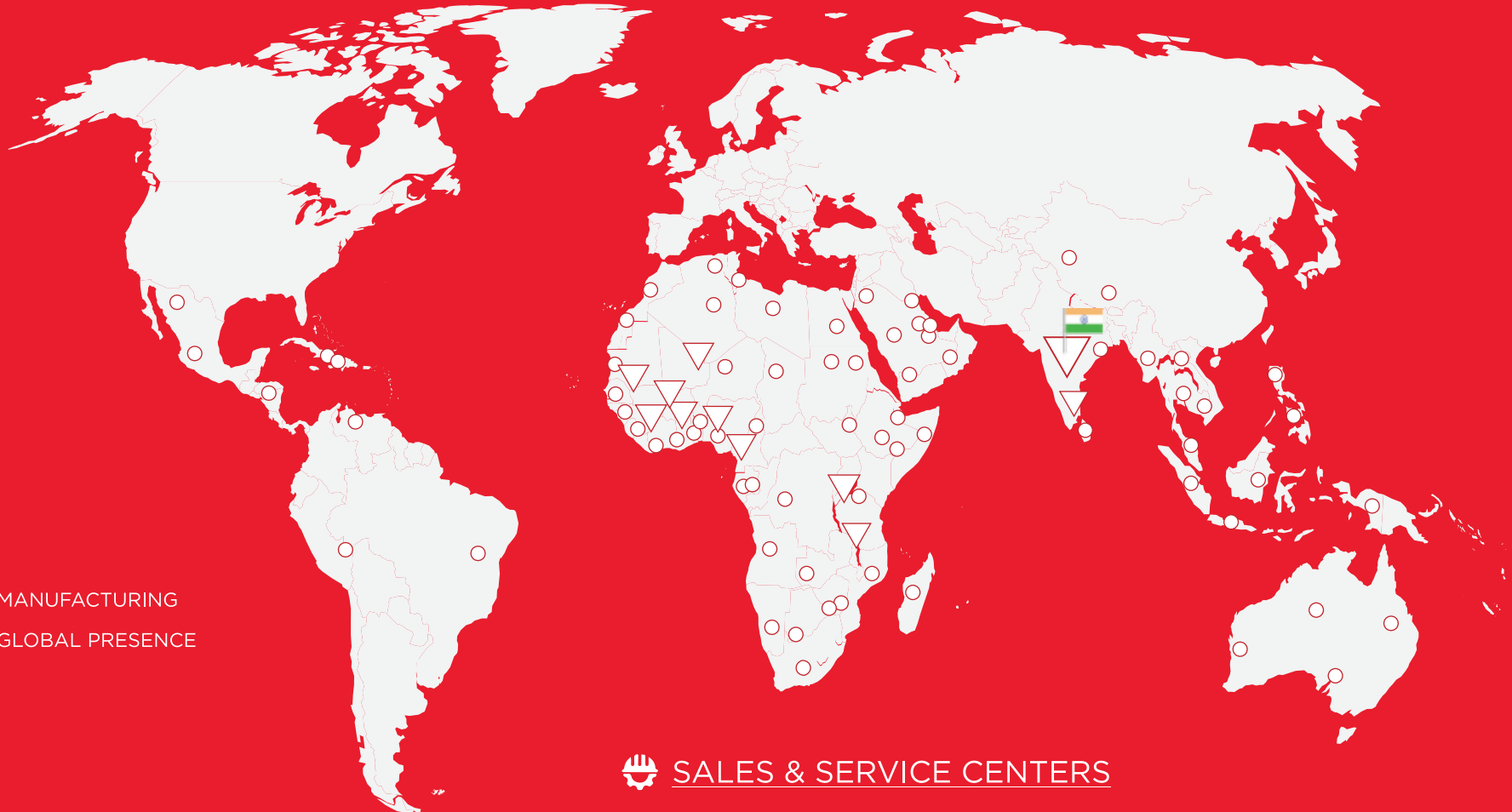
ACCIDENT HANDLING TOOL



RC HAMMER & BITS



# OUR GLOBAL PRESENCE



- ▼ MANUFACTURING
- GLOBAL PRESENCE

## SALES & SERVICE CENTERS

- ▼ PRD RIGS KENYA LIMITED  
Nairobi, Kenya.
- ▼ PRD RIGS GUINEA SARL  
Conakry, Guinea.
- ▼ PRD RIGS MALI SARL  
Bamako, Mali.
- ▼ PRD RIGS BURKINA FASO SARL  
Ouagadougou, Burkina Faso.
- ▼ PRD RIGS LANKA PVT LTD  
Ja-Ela, Sri Lanka.
- ▼ PRD RIGS TANZANIA LIMITED  
Dar Es Salaam, Tanzania.
- ▼ PRD RIGS GHANA LIMITED  
Accra, Ghana.

Plot No. M8, M9, SIPCOT SEZ For Engineering Products,  
Perundurai - 638 052, Tamil Nadu, India.  
+91 97866 88799 | [marketing@prdrigs.com](mailto:marketing@prdrigs.com) | [www.prdrigs.com](http://www.prdrigs.com)



**PARANTHAMAN EXPORTERS**  
GOOD TO DRILL<sup>®</sup>